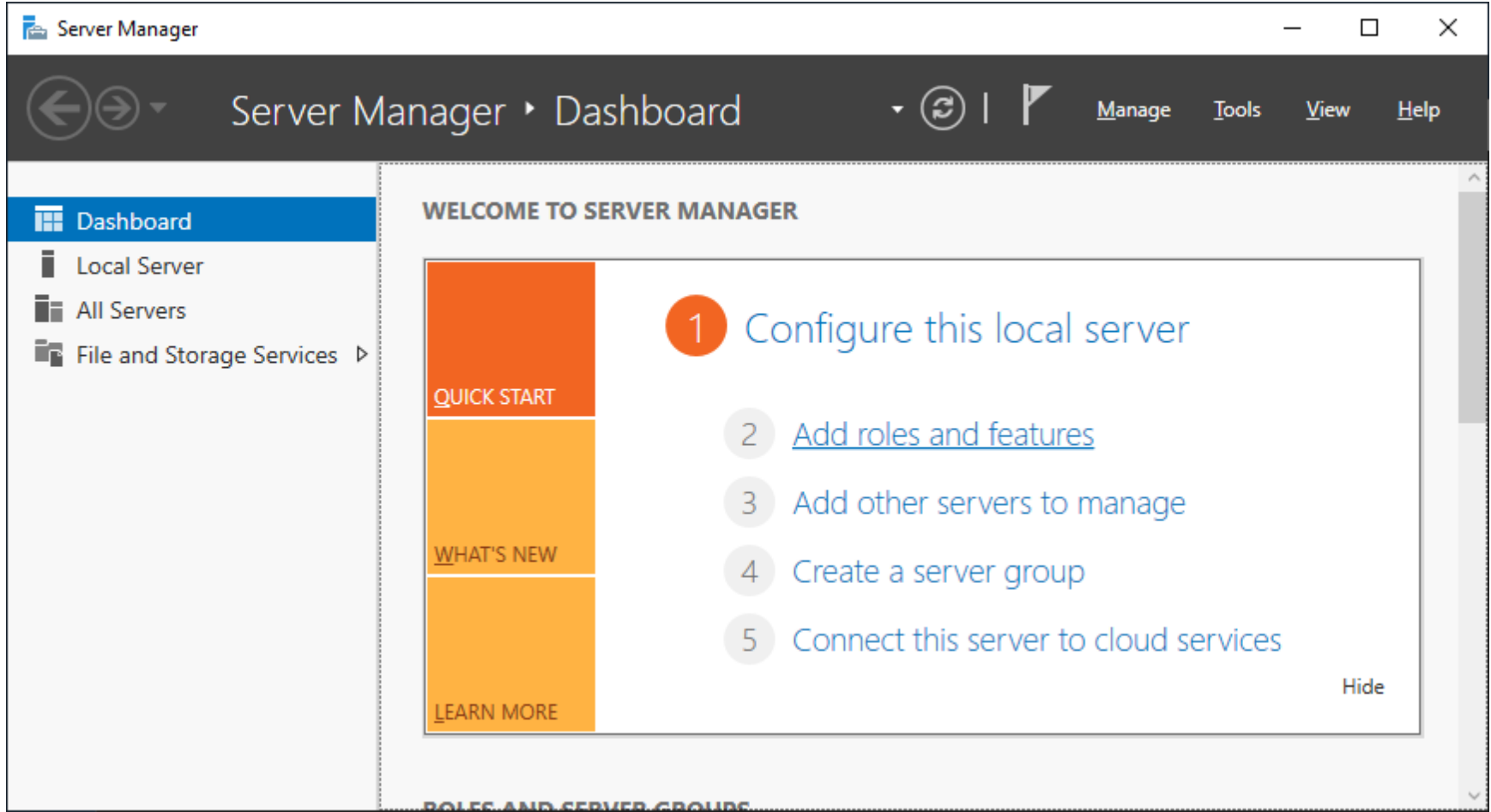


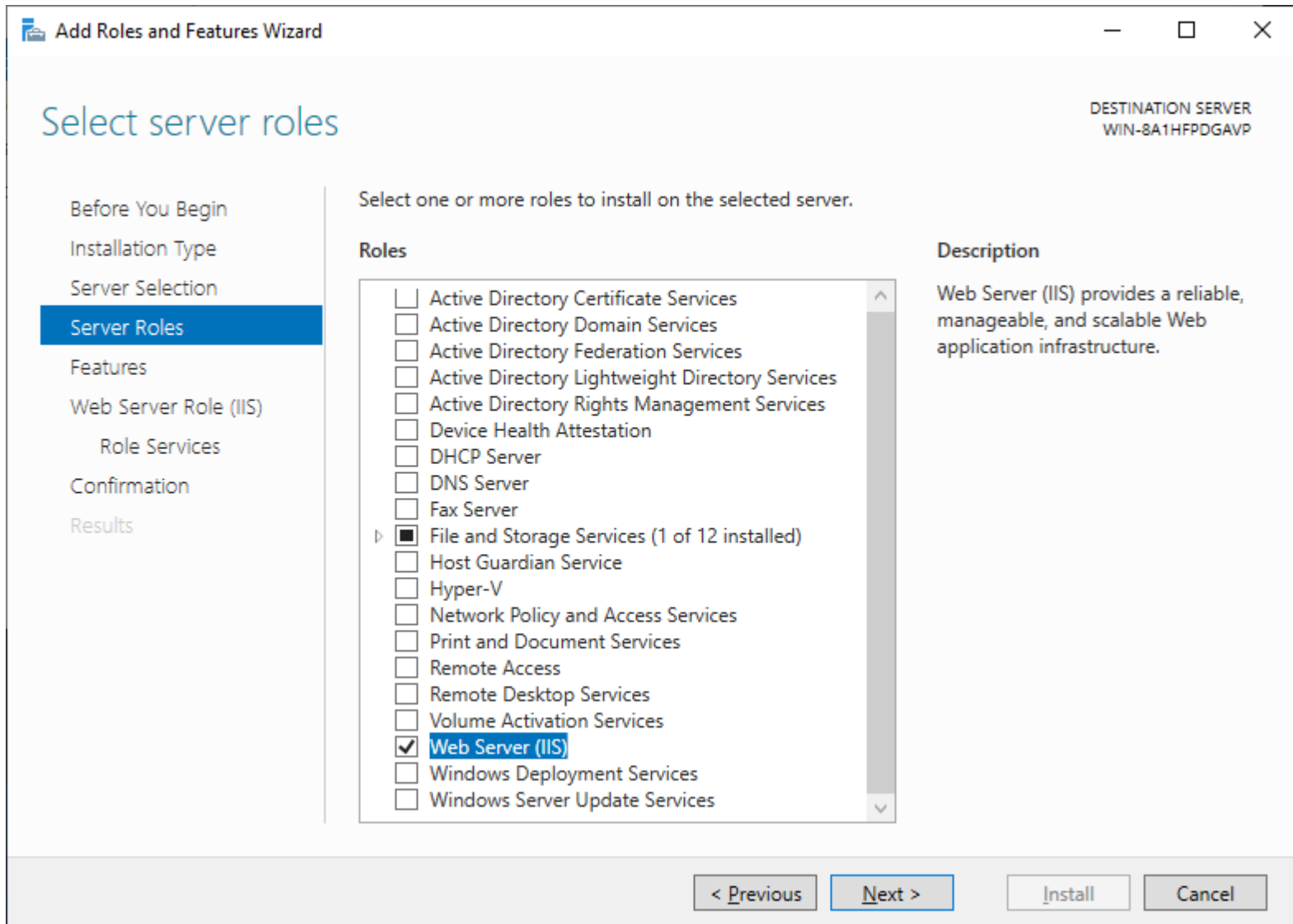
**2019 Server IIS/.NET Install**  
**UGCC Control Panel**

**Brainless Technologies Ltd.** | [www.brainless.us](http://www.brainless.us) | **Support:** <http://www.brainless.us/contact.aspx>

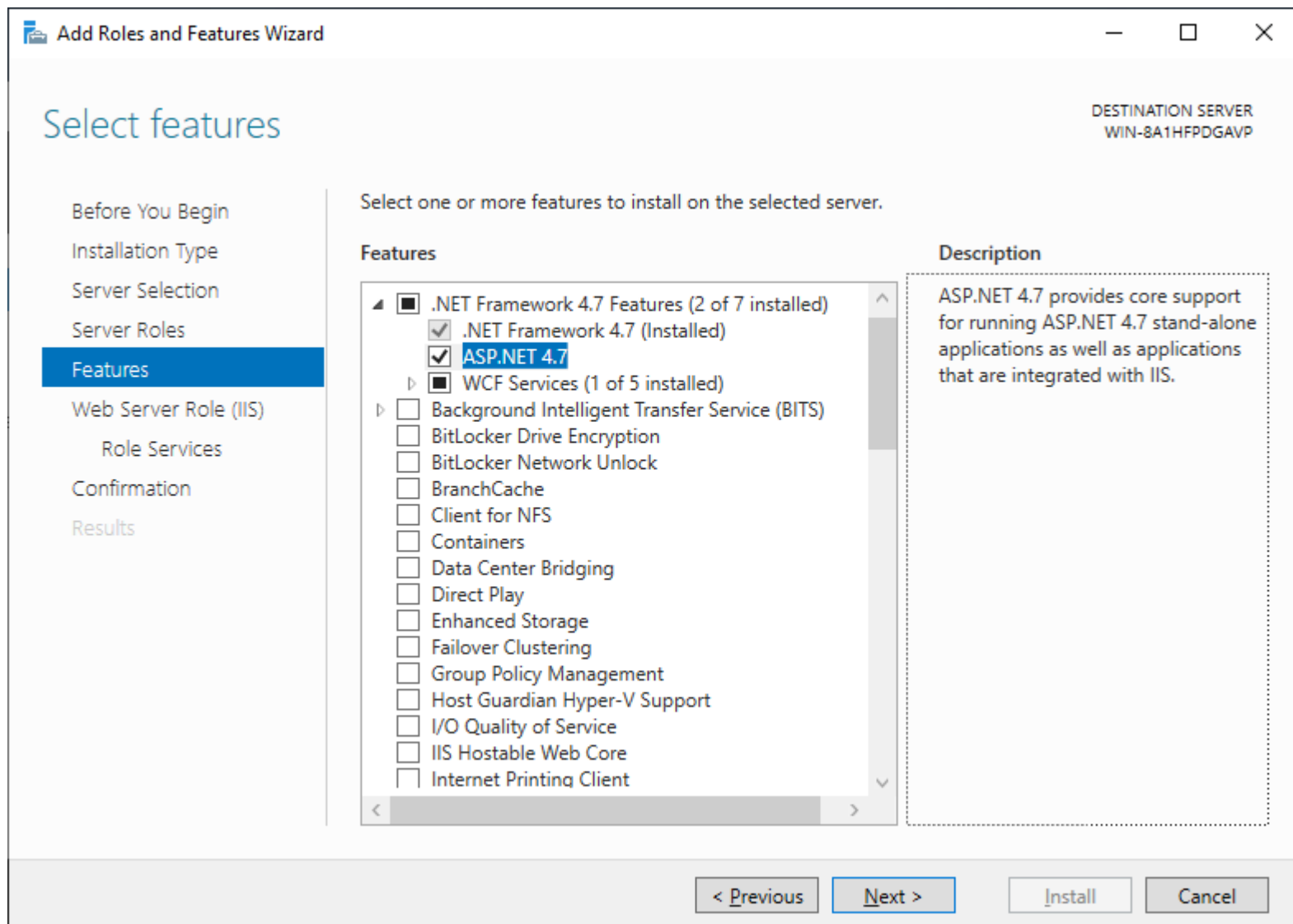
- A troubleshooting section is included at the end of the document for common issues.
- Open Server Manager via Start → Server Manager.
- Click 'Add roles and features' option in main panel.



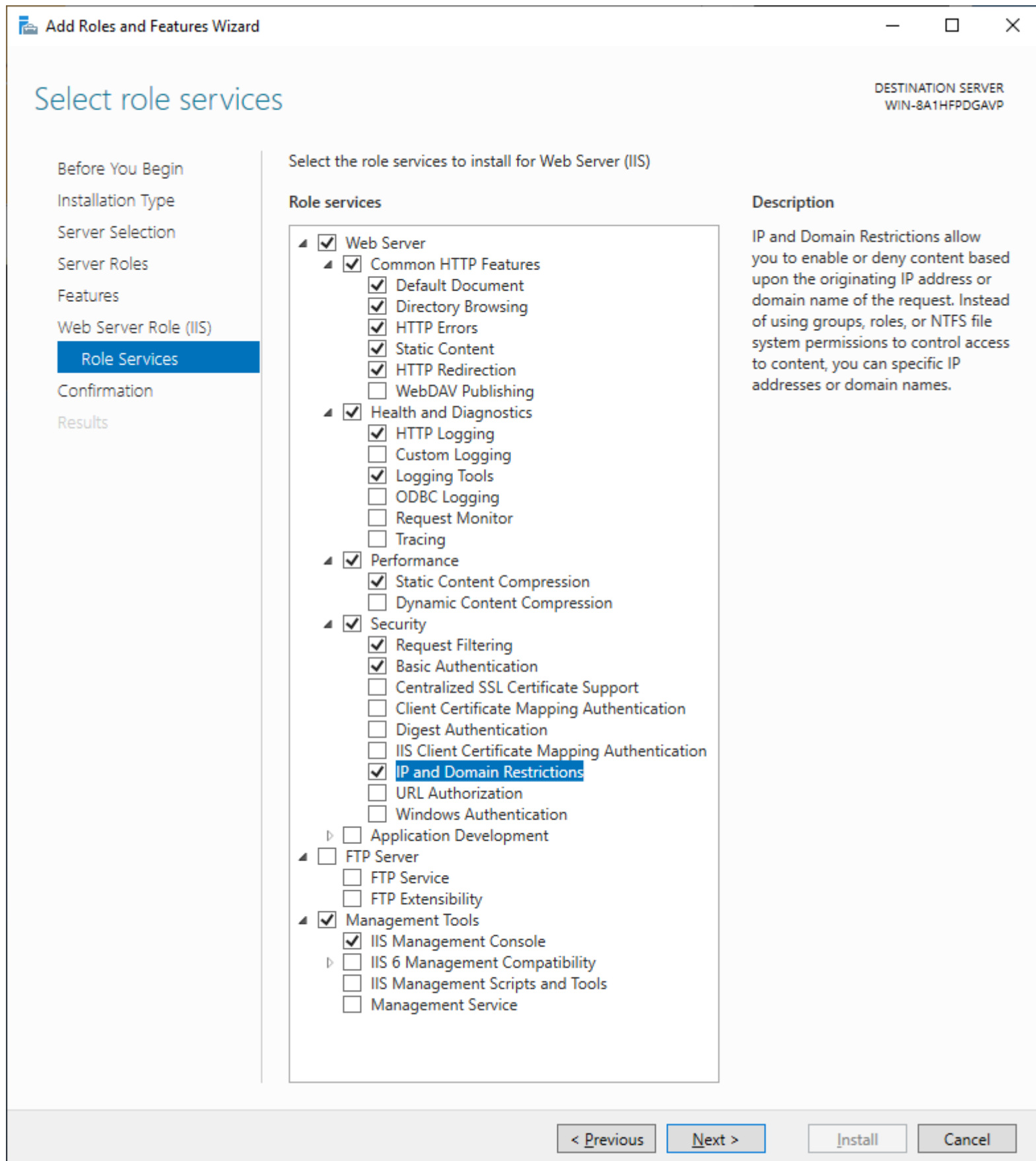
- Once you get to the below step in the wizard, select “Web Server (IIS)” and click next. Accept any other features the wizard prompts you for.



- Ensure the '.NET Framework 4.7' sub-option is selected as shown below and click next.

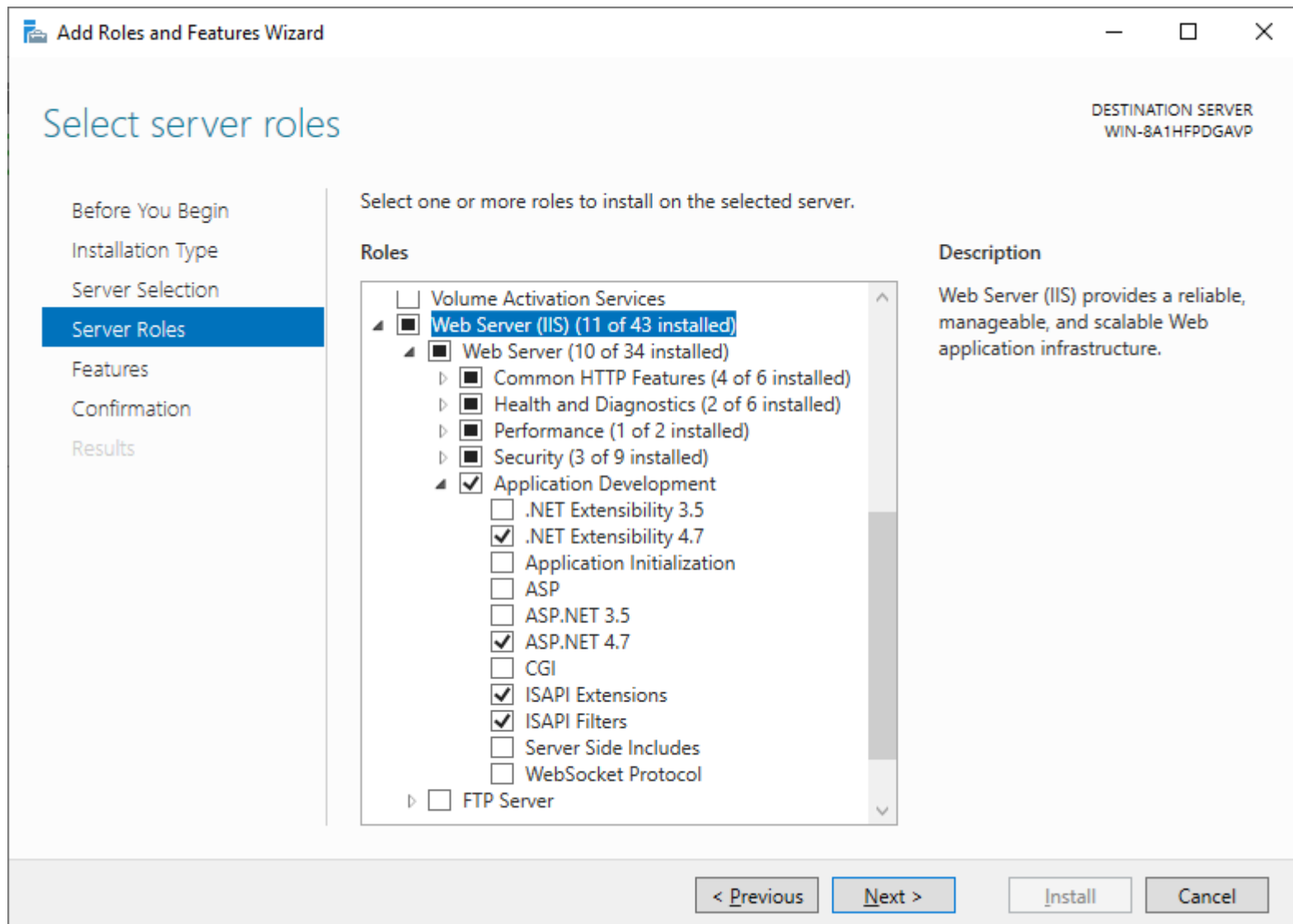


- Choose the following IIS options to match the following screenshot. Click yes/ok on any dialog boxes that pop up requesting to add other options. You may also enable other features if you feel they are appropriate.

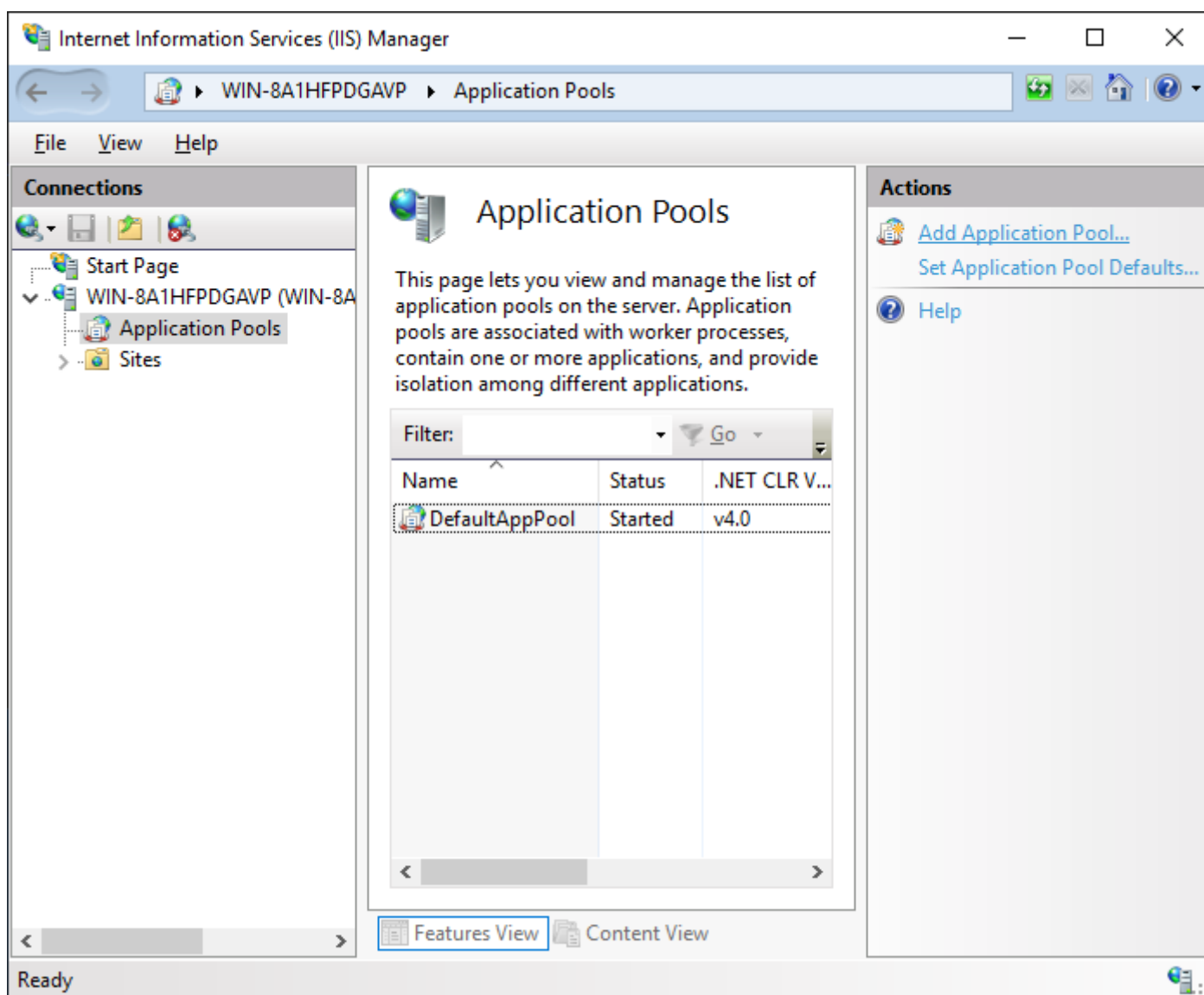


- Finish the wizard until complete.

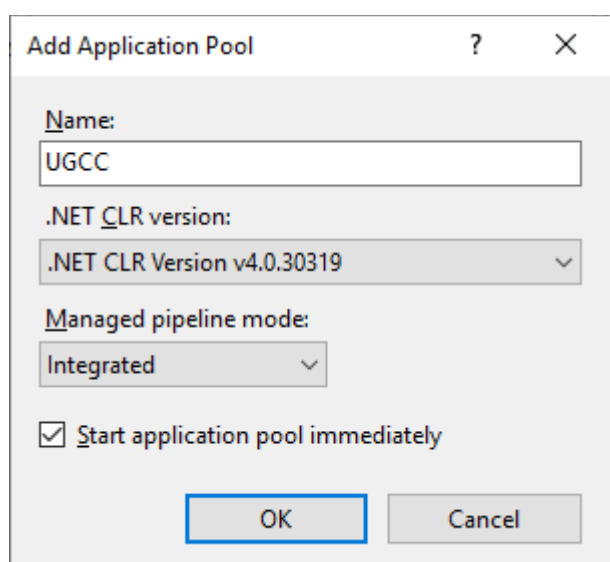
- Re-run the Add Roles and Features Wizard, this time under Web Server (IIS), there will be an Application Development category. Select Asp.net 4.x. Select any other features offered by the wizard. Click next and finish the wizard.



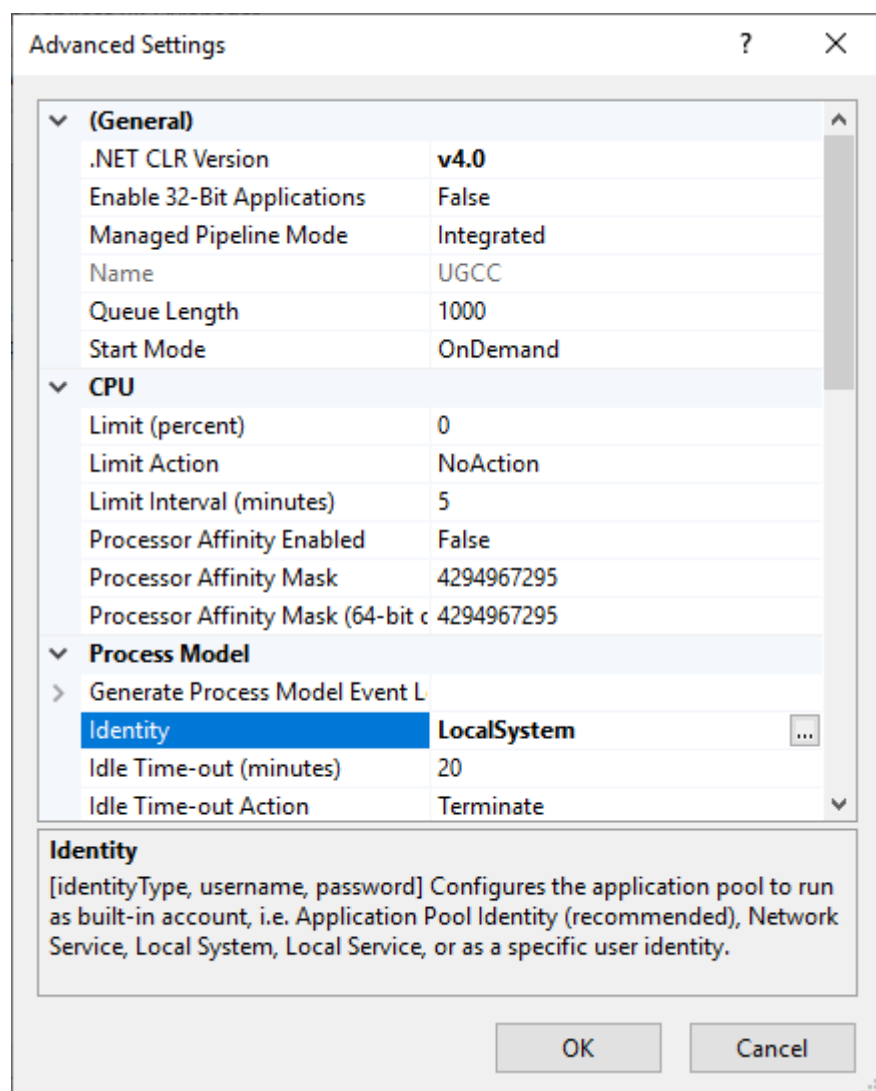
- Once IIS is installed, click Start, Administrative Tools, and choose 'Internet Information Services (IIS) Manager'.
- Expand the list on the left until you see 'Application Pools'. Select it, and then click 'Add application pool...' in the actions bar on the right.



- For the name enter 'UGCC' and set the CLR version to 4.0.xxxxx. Click 'OK'.

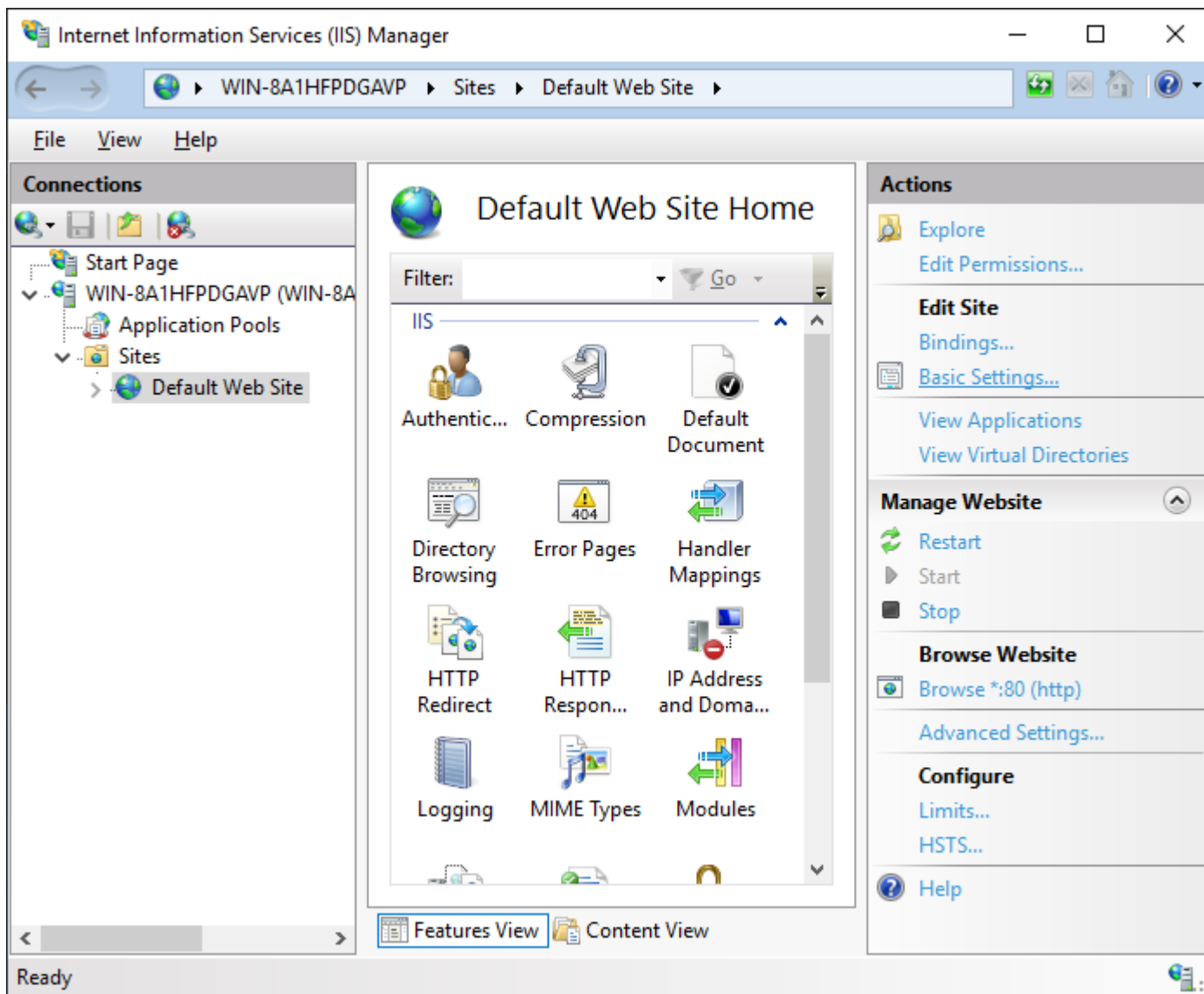


- Now right click on the new 'UGCC' item and select Advanced Settings.
- In the new window that opens, find the 'Identity' setting (under Process Model section), and select 'LocalSystem' from the built-in accounts section. Click OK. Click Ok again on the advanced settings window.

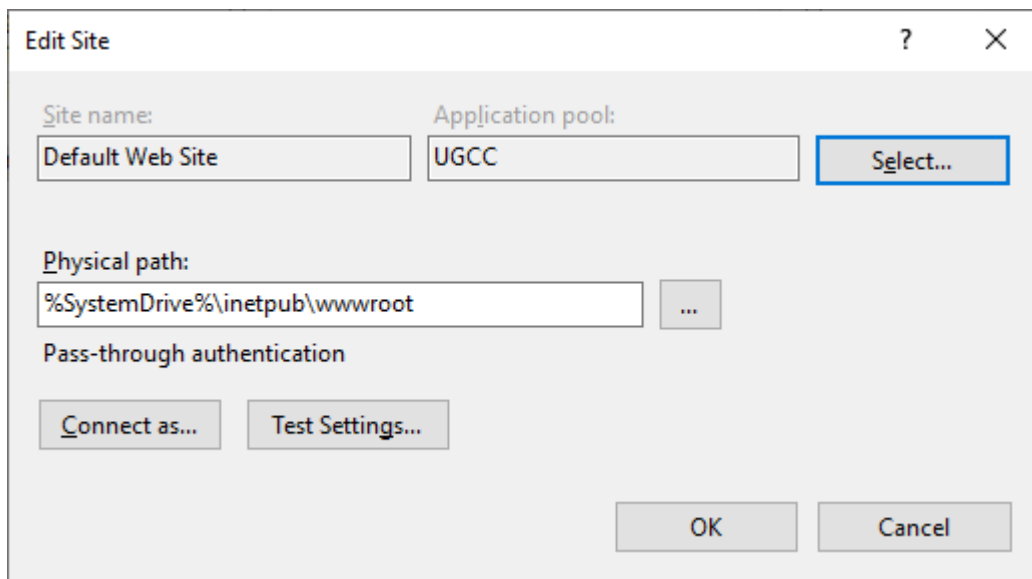


We are going to install the panel in the default site. You can create a new site if you wish (if you have an existing site running under IIS, then you will need to create a new site, or create a subfolder of an existing site to place UGCC in). Setup of UGCC in a subfolder of an existing site is shown further in the guide.

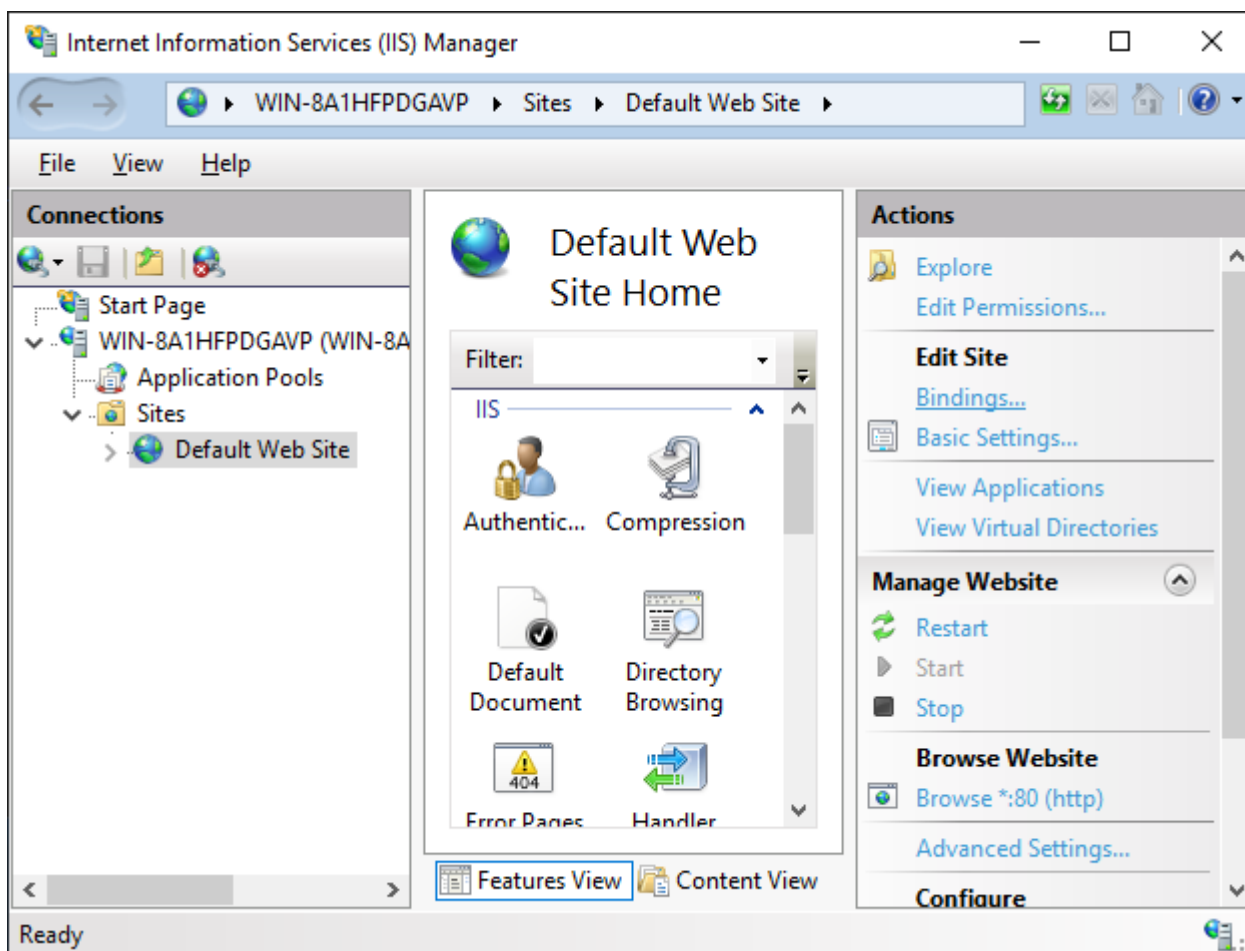
- Expand the list on the left until you see 'Default Web Site'. Click it. In the Actions bar on the right, click Basic Settings.



- Click the 'Select...' button. And choose the UGCC option listed in the dropdown. Click OK.



- The 'Bindings...' setting right above the 'Basic Settings...' link will let you set the IP/URL/port for the panel.

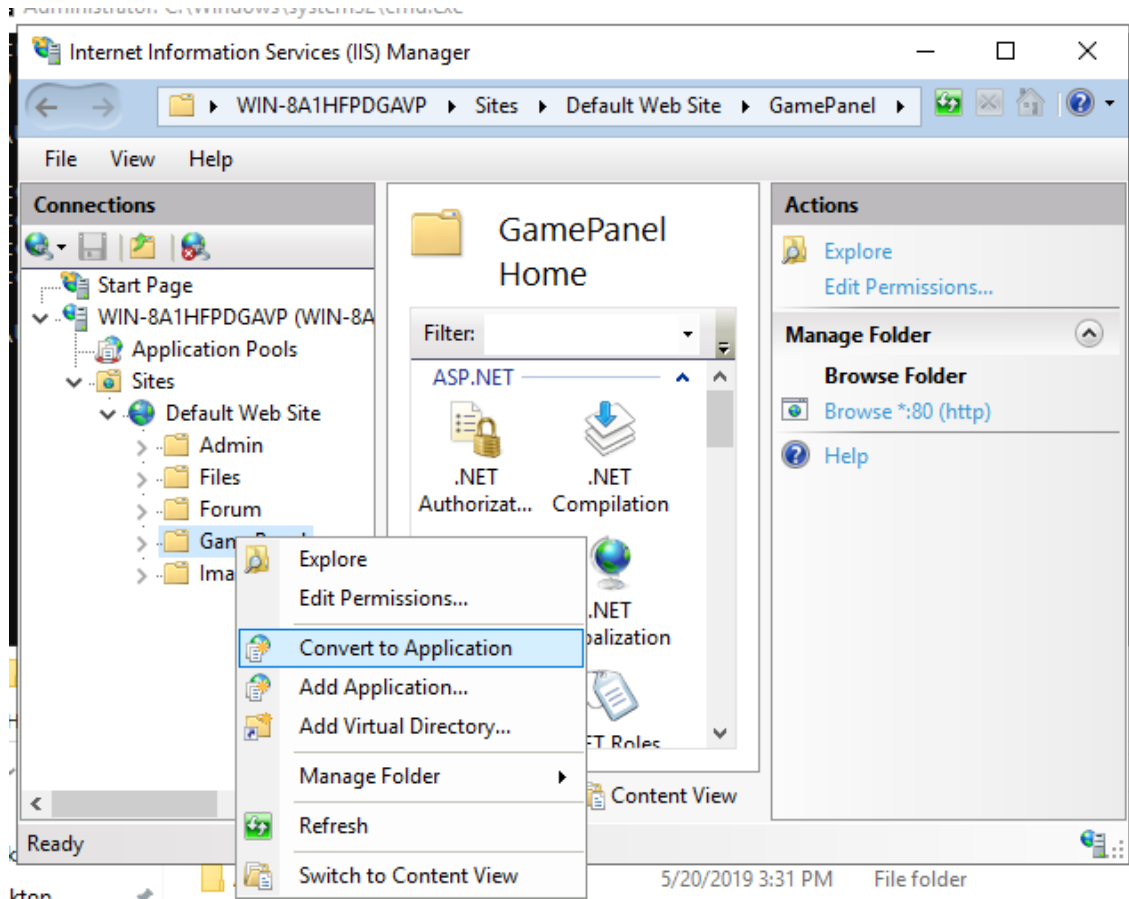


- Navigate to C:\inetpub\wwwroot (or the appropriate directory if setting up elsewhere).
  - Remove all files and directories.
  - Copy the panel files (WWWPanel for a 32bit OS or WWWPanel-x64 for a 64bit OS from the deploy archive) into this folder.
- Also copy the Web.config file to C:\inetpub\wwwroot (or appropriate folder) from the Configs\Windows folder of the deploy archive.
- The default values in the Web.config use 'C:\Program Files\UGCC' for everything. You can leave these values if you'd like otherwise edit the Web.config file to point to appropriate locations.
- Configure the database you will be using in Web.config:
  - You can use either MySQL or SQLite.
    - If you are unsure of which to use, stick with SQLite as it's the easiest option, but if you plan on adding additional nodes that will be managed by this web install; you will have to use MySQL. Setting up MySQL is outside the scope of this guide.
  - If you will be using SQLite copy the ugcc.db3 file in the DB folder of the deploy archive into the path you entered in the Web.config for the 'sqlitelocation' setting.
    - If you're using the default values in the Web.config you can copy the ugcc.db3 file to 'C:\Program Files\UGCC'.
  - If you are using MySQL change the 'dbtype' to mysql and enter the values further down for your MySQL server.
- Visit the Check.aspx page in a browser, ensure all tests pass before trying to login or proceeding. If you need assistance please post on our forums.
- If everything passes on the Check.aspx page you should be all set to login. Default username and password is admin/admin.
- All documentation can be found at <https://www.brainless.us/forum/viewtopic.php?f=20&t=80>

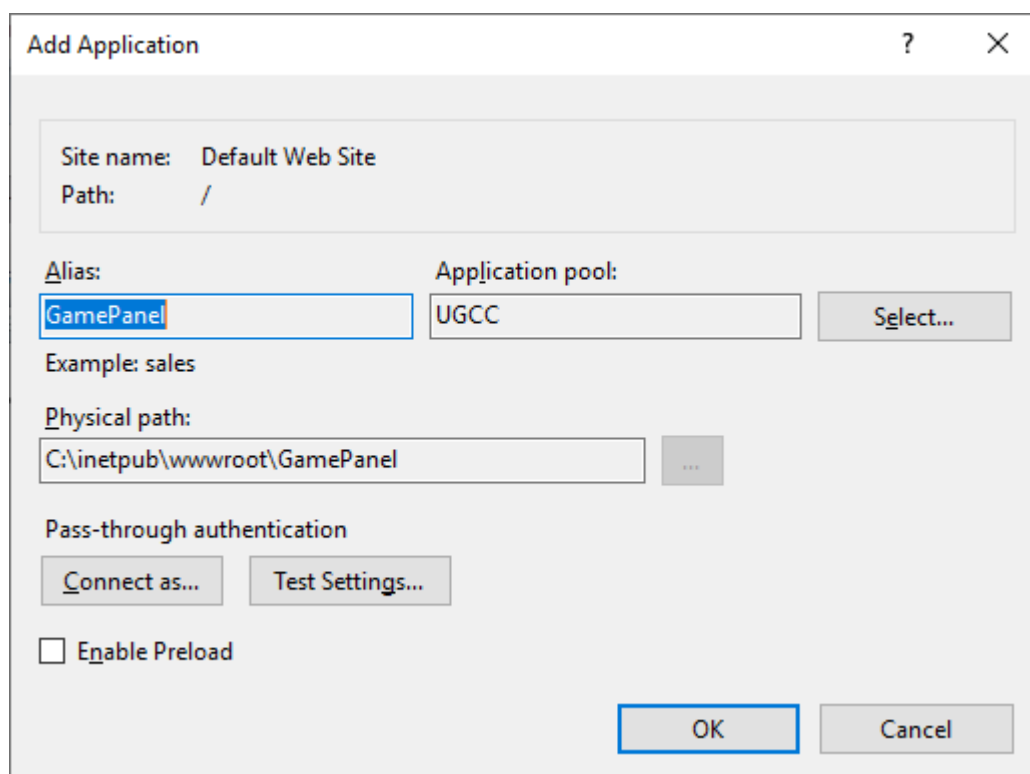


## Subfolder Install of an Existing Site

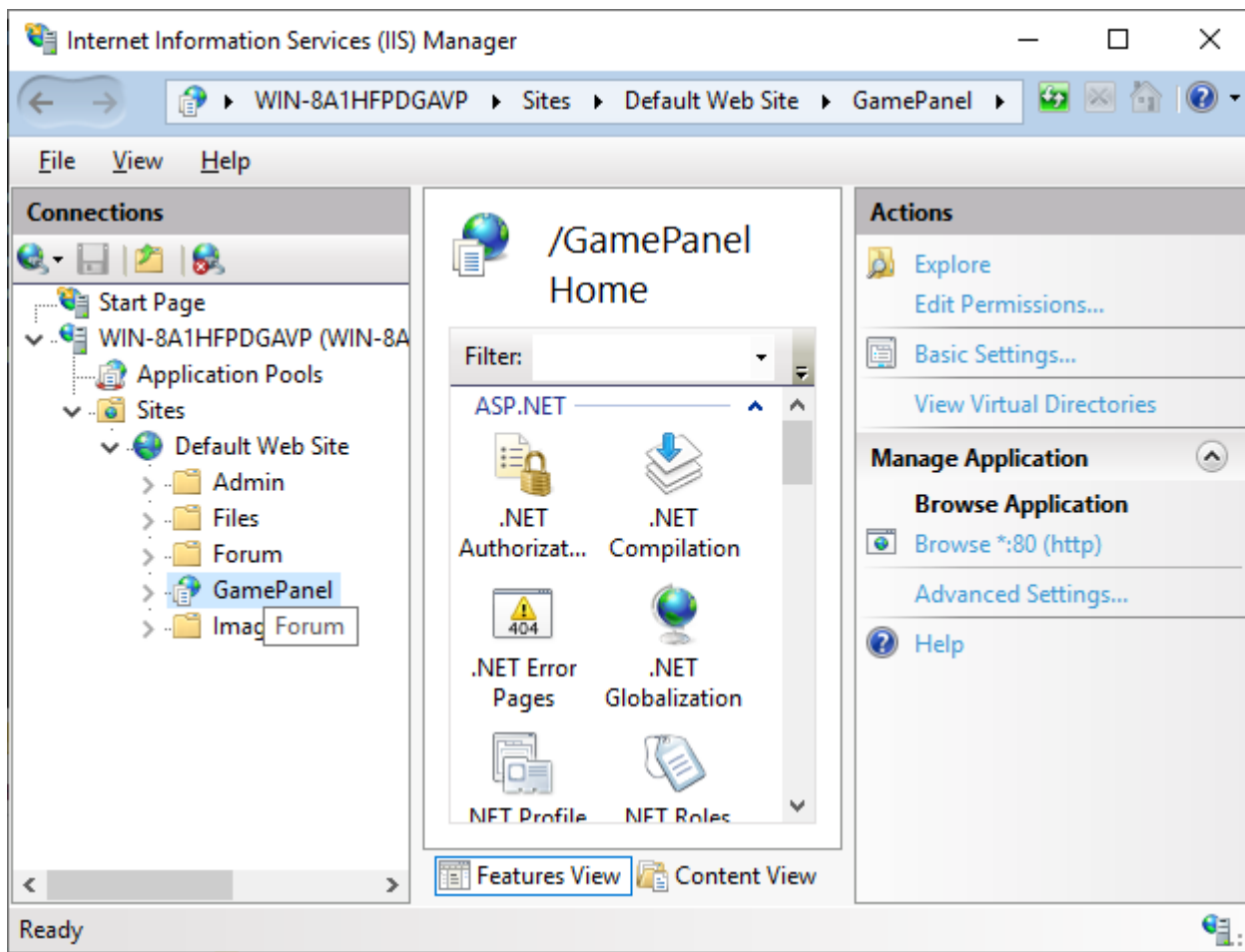
If you would rather your panel be in a subfolder and not in the root of the site, simply create a folder of any name and copy the panel's files to this folder. Then right click the folder name in the IIS Manager and choose 'Convert to Application'. In this example we are installing into the GamePanel folder making the URL <http://www.brainless.us/GamePanel>.



- Next, you'll be prompted with the following window. Set your application pool and you're all set.

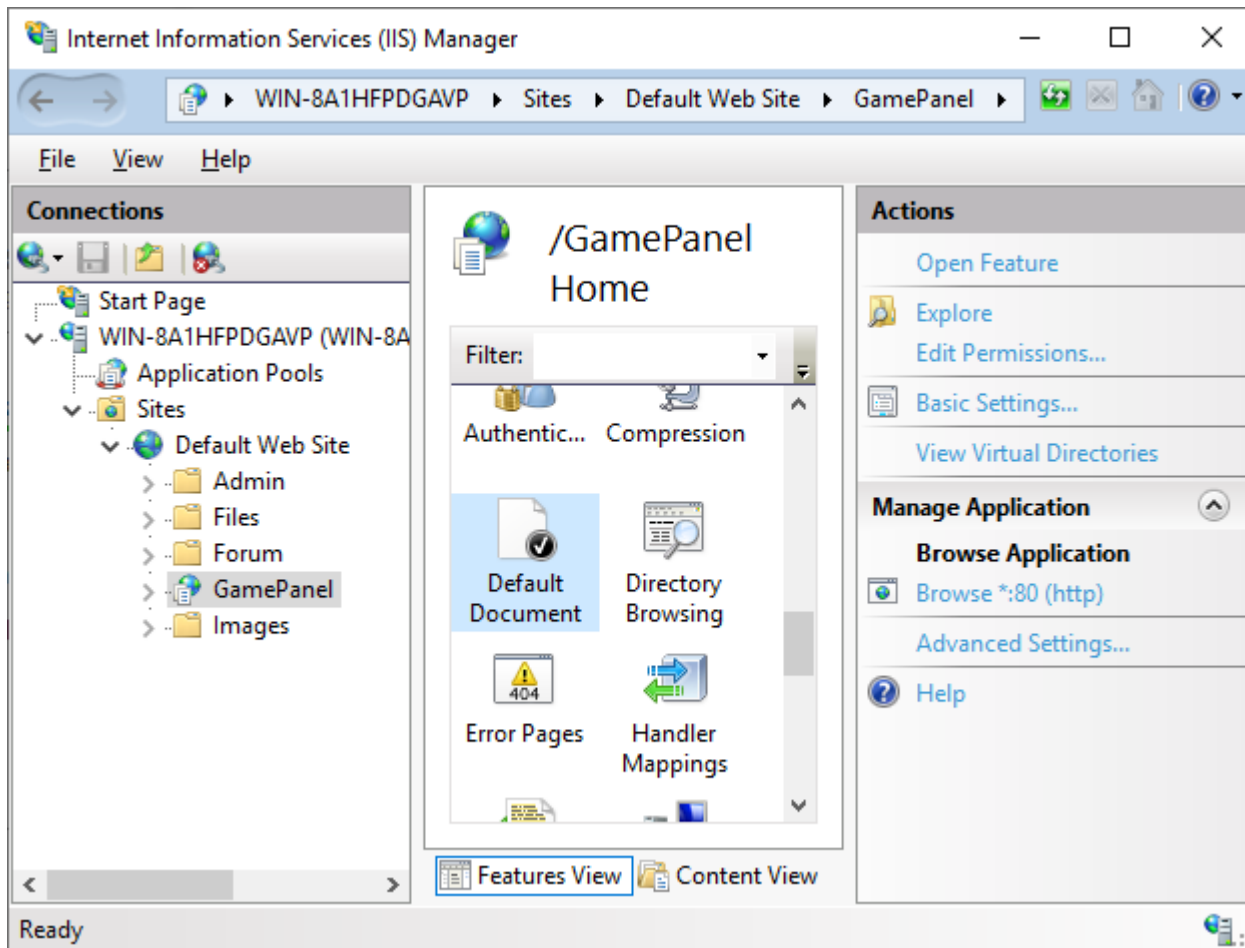


- The folder icon will change to show it is now configured as an application.



## Troubleshooting

You may need to set a default document (a value of default.aspx) to a new or existing site if the login pages does not open when using the base URL (i.e. brainless.us/Default.aspx works, but browsing to brainless.us gives you an error).



Add a default.aspx entry.

