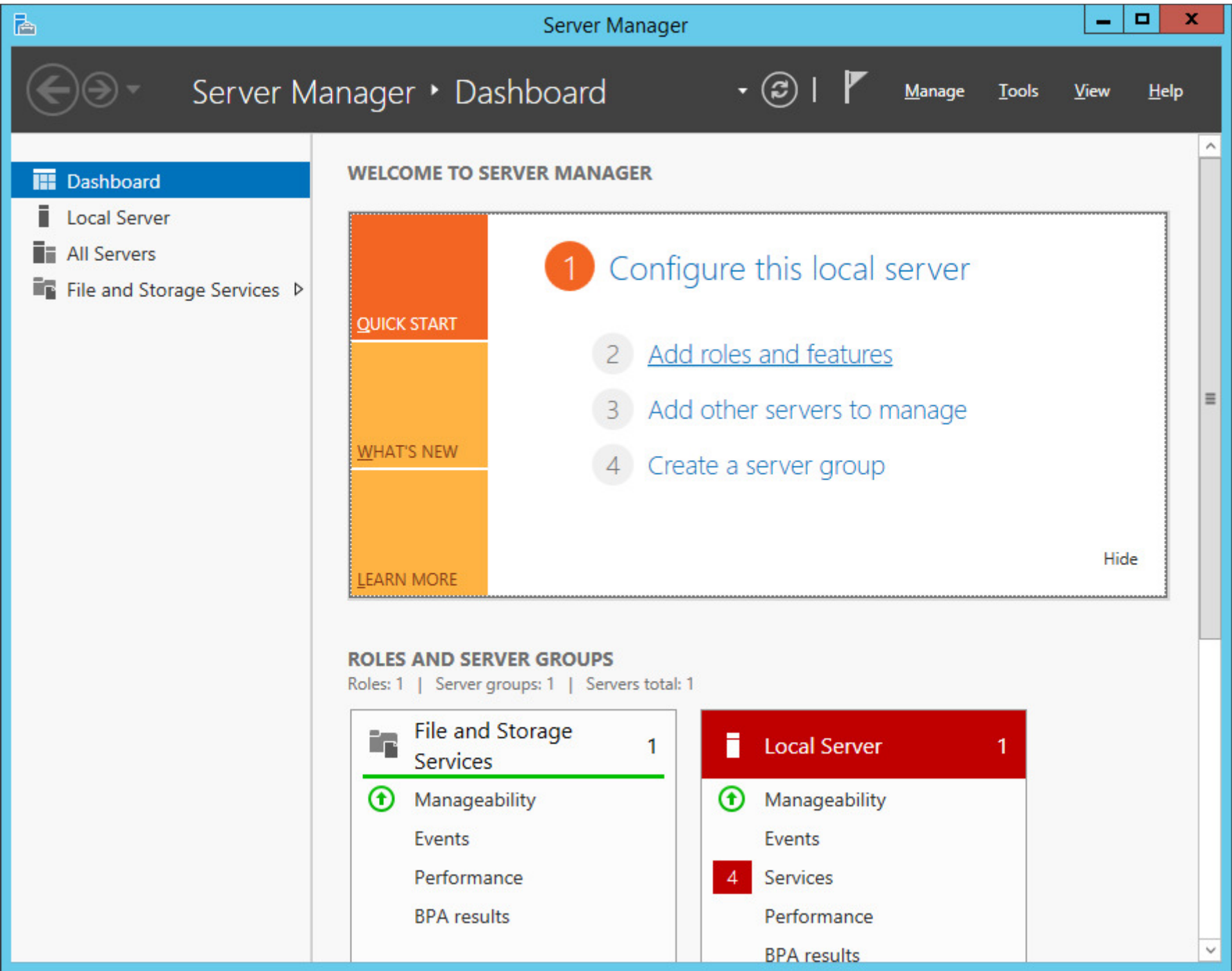
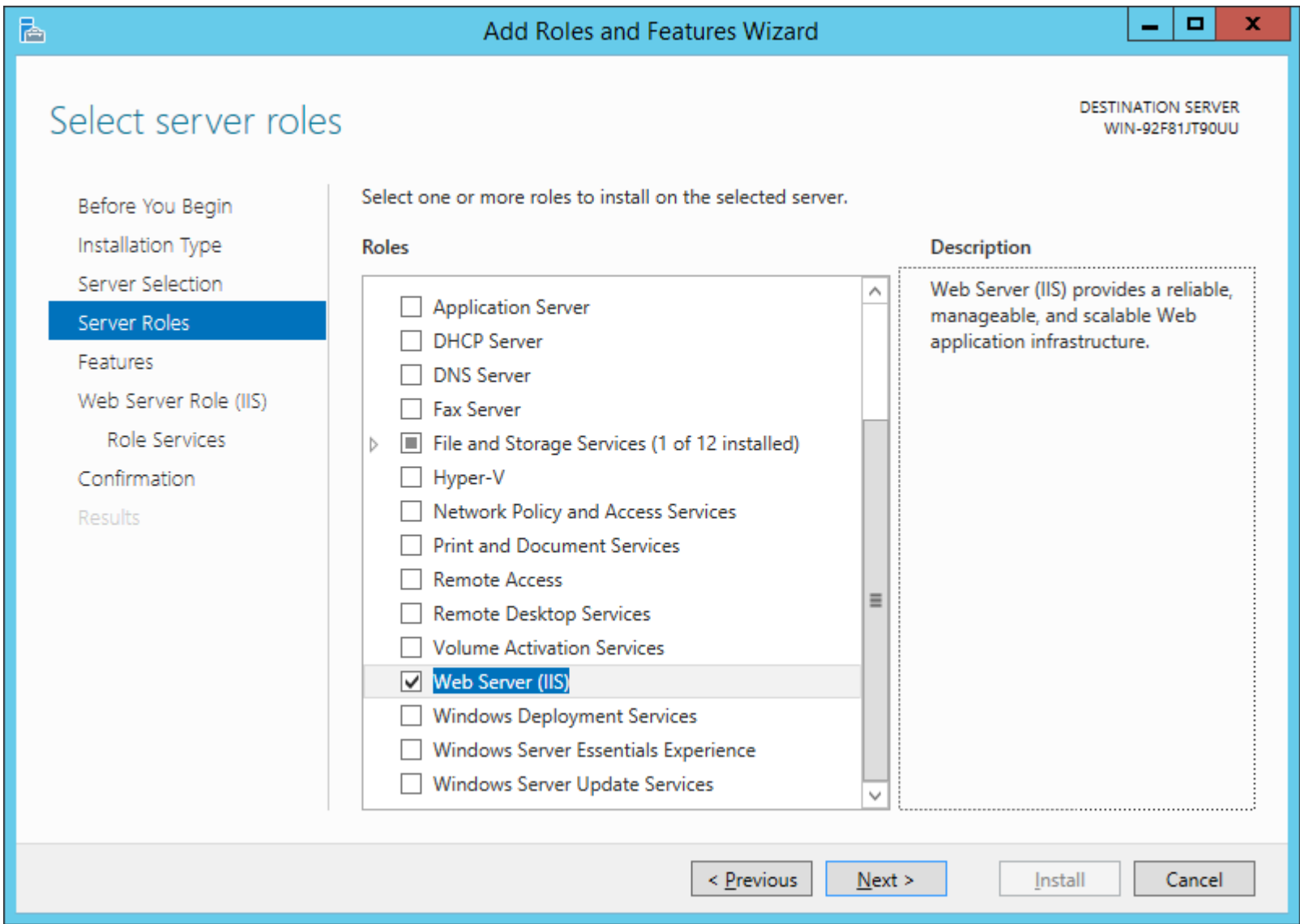


2012 R2 Server IIS/.NET Install
UGCC Control Panel
Brainless Technologies Ltd. | www.brainless.us

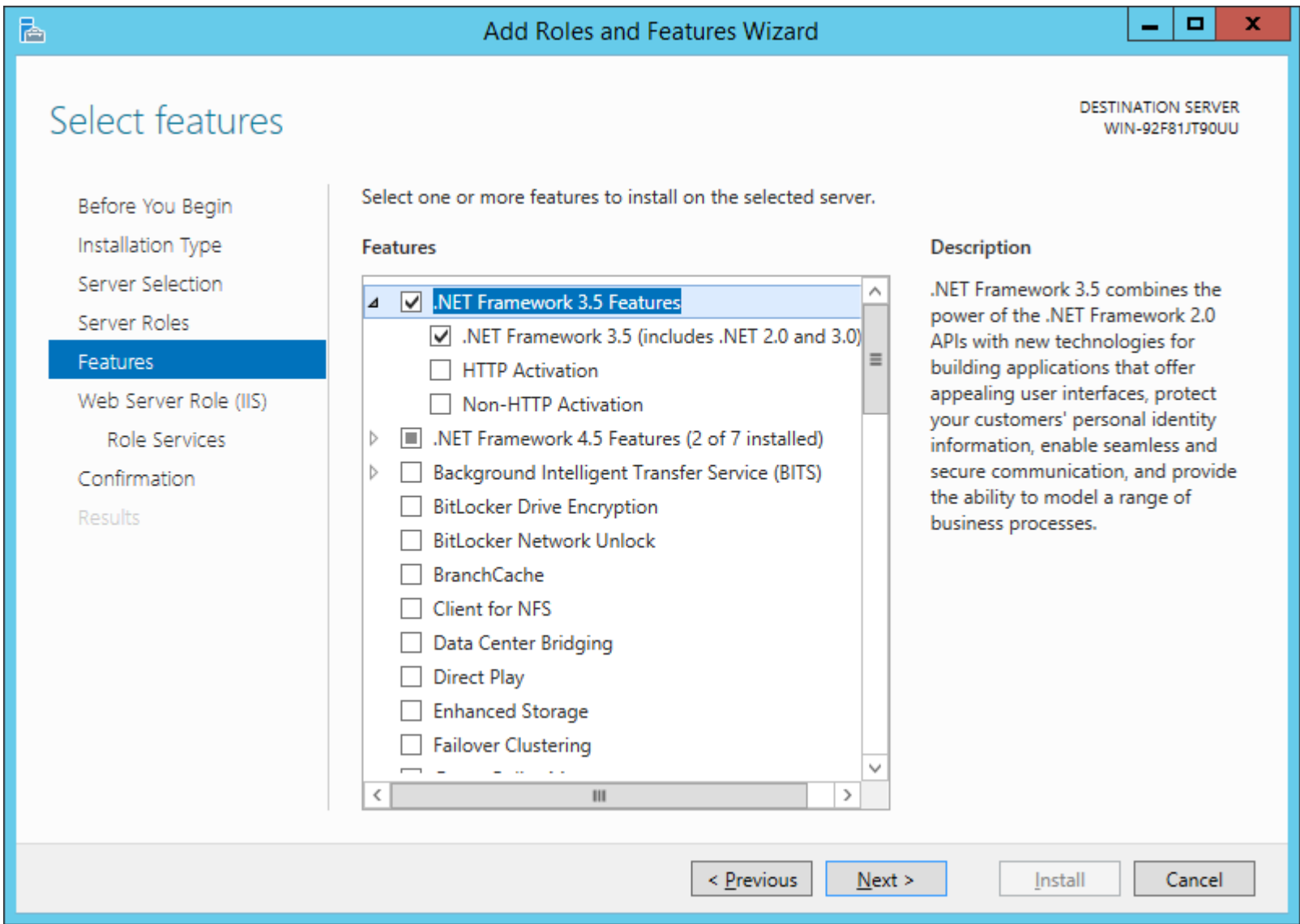
- Open Server Manager via Start➔Server Manager.
- Click ‘Add roles and features’ option in main pane.



- Once you get to the below step in the wizard, select “Web Server (IIS)” and click next.



- Choose the '.NET Framework 3.5 (includes .NET 2.0 and 3.0)' sub-option as shown below and click next.



- Choose the following IIS options to match the following two screenshots. Click yes/ok on any dialog boxes that pop up requesting to add other options.
- You may also enable other features if you feel they are appropriate.

DESTINATION SERVER
WIN-92F81JT90UU

Select role services

Before You Begin

Installation Type

Server Selection

Server Roles

Features

Web Server Role (IIS)

Role Services

Confirmation

Results

Select the role services to install for Web Server (IIS)

Role services

☒

Web Server

☒ Common HTTP Features

☒ Default Document

☒ Directory Browsing

☒ HTTP Errors

☒ Static Content

☒ HTTP Redirection

☐ WebDAV Publishing

☒ Health and Diagnostics

☒ HTTP Logging

☐ Custom Logging

☐ Logging Tools

☐ ODBC Logging

☐ Request Monitor

☐ Tracing

☒ Performance

☒ Static Content Compression

☐ Dynamic Content Compression

☒ Security

☒ Request Filtering

☐ Basic Authentication

☐ Centralized SSL Certificate Support

☐ Client Certificate Mapping Authentication

☐ Digest Authentication

☐ IIS Client Certificate Mapping Authentication

☒ IP and Domain Restrictions

☐ URL Authorization

☐ Windows Authentication

☒ Application Development

☒ .NET Extensibility 3.5

☐ .NET Extensibility 4.5

☐ Application Initialization

☐ ASP

Description

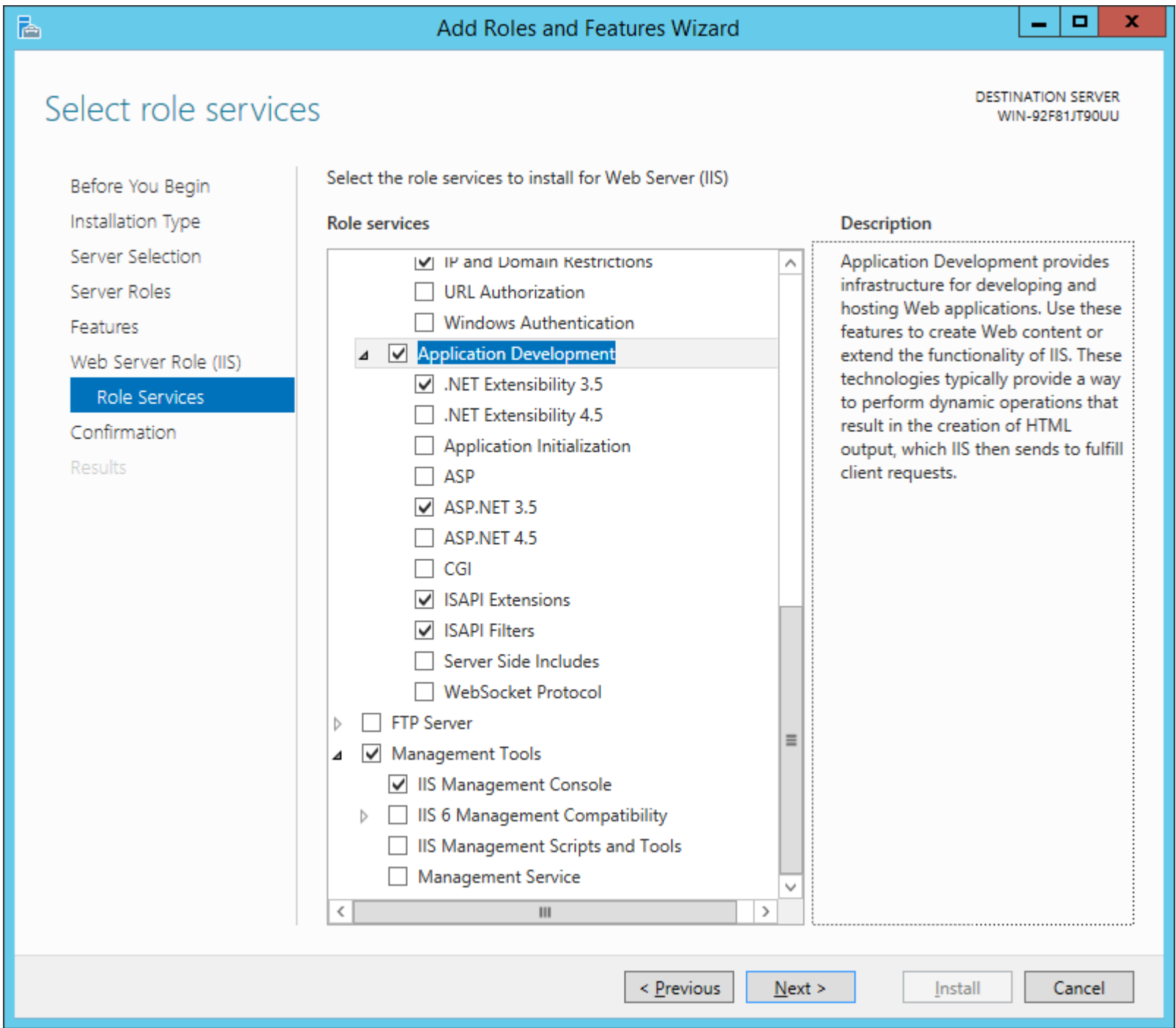
ASP.NET provides a server side object oriented programming environment for building Web sites and Web applications using managed code. ASP.NET is not simply a new version of ASP. Having been entirely re-architected to provide a highly productive programming experience based on the .NET Framework, ASP.NET provides a robust infrastructure for building web applications.

< Previous

Next >

Install

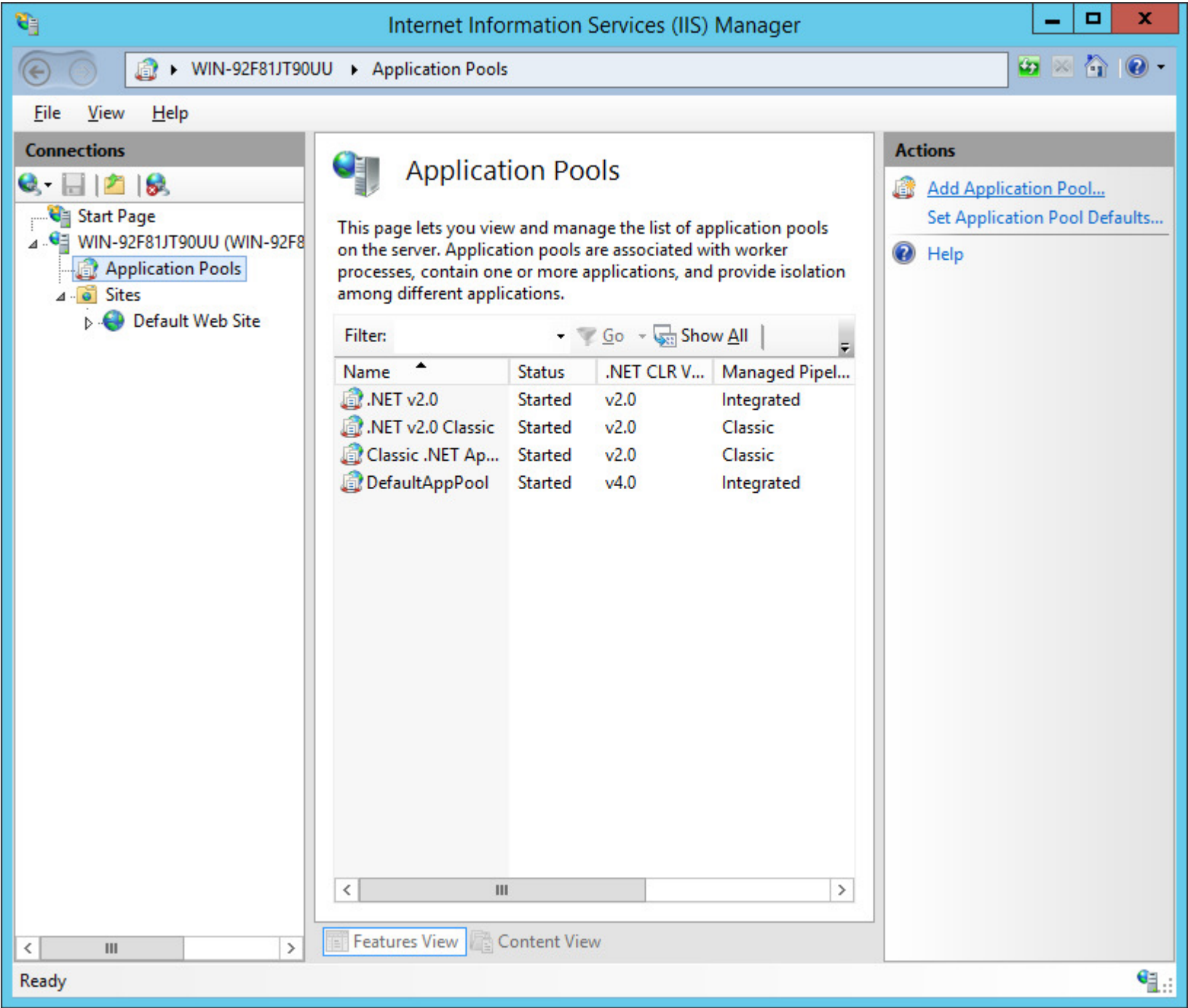
Cancel



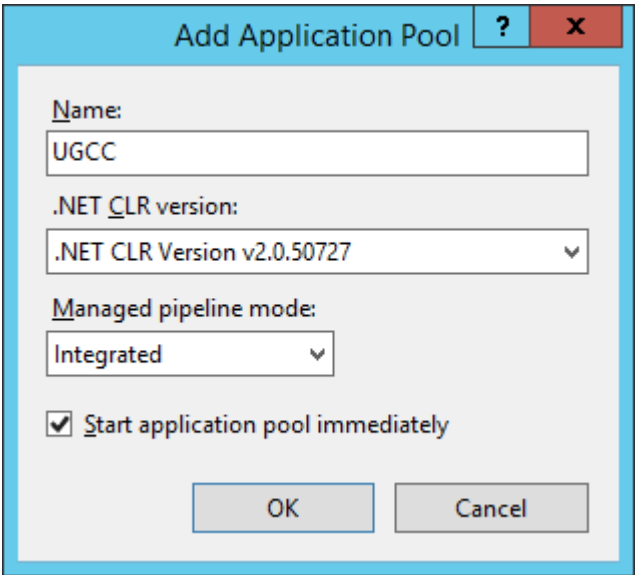
- Finish the wizard until complete.

We are going to install the panel in the default site. You can create a new site if you wish (if you have an existing site running under IIS, then you need to create a new site, or create a subfolder to place UGCC in).

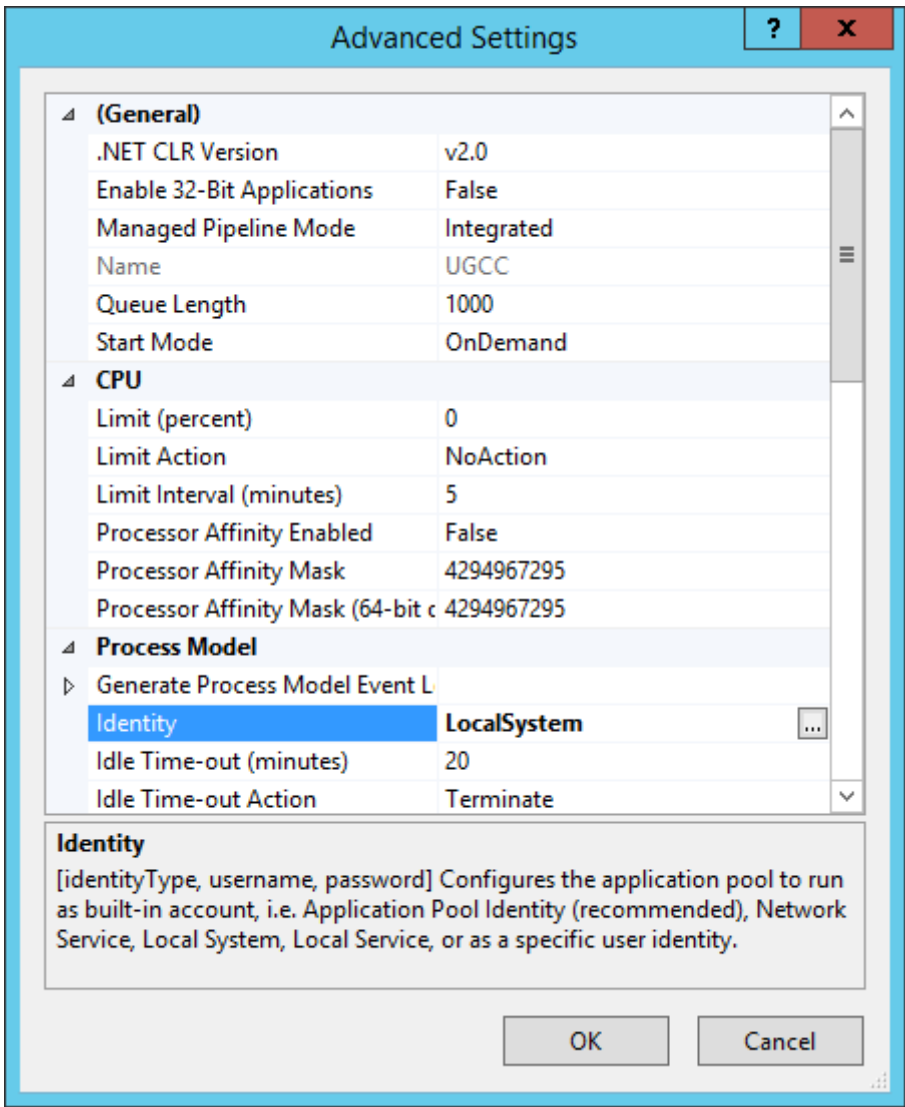
- Once IIS is installed, click Start, Administrative Tools, and choose 'Internet Information Services (IIS) Manager'.
- Expand the list on the left until you see 'Application Pools'. Select it, and then click 'Add application pool...' in the actions bar on the right.



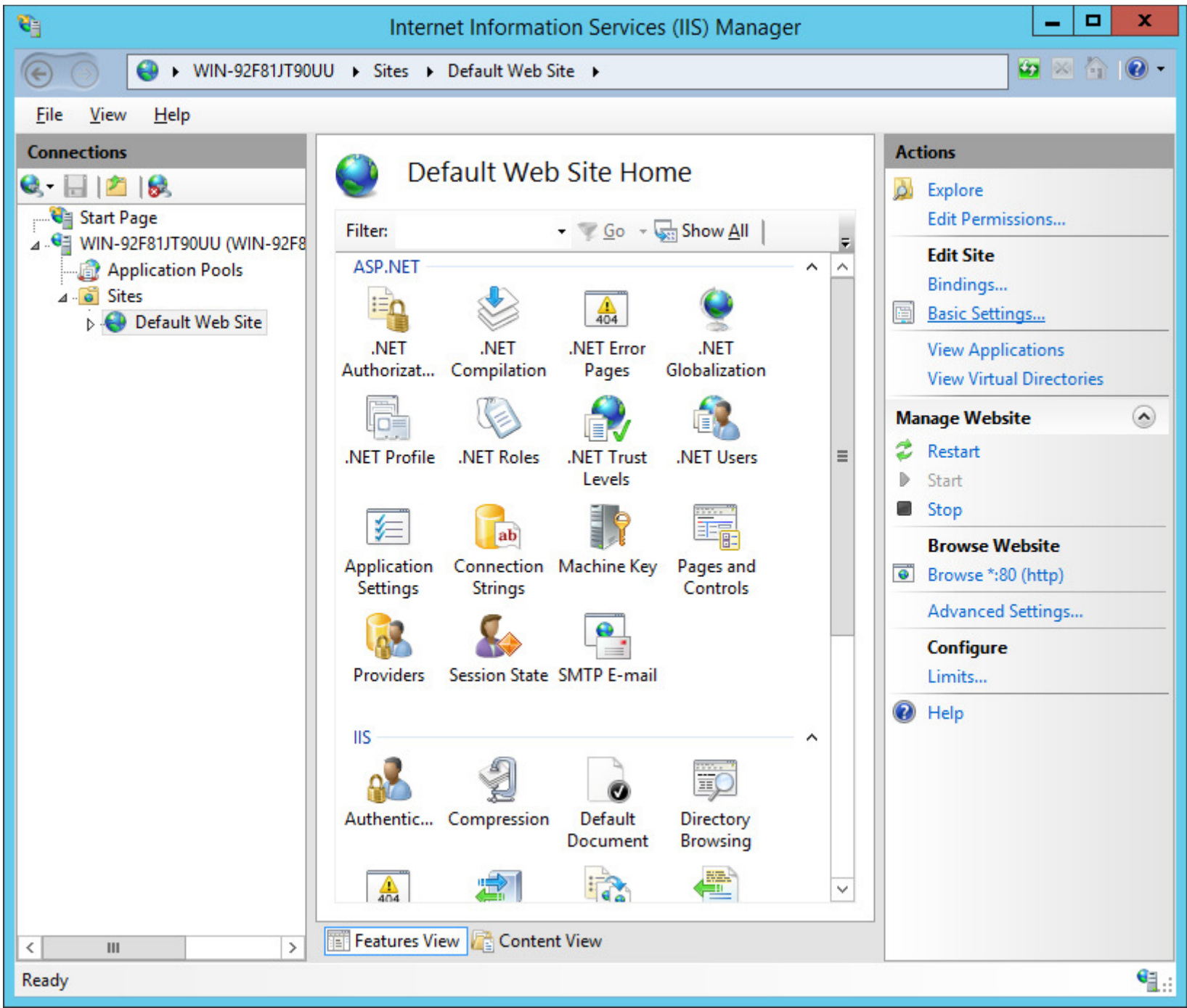
- For the name enter 'UGCC' and set the CLR version to 2.0. Click 'OK'.



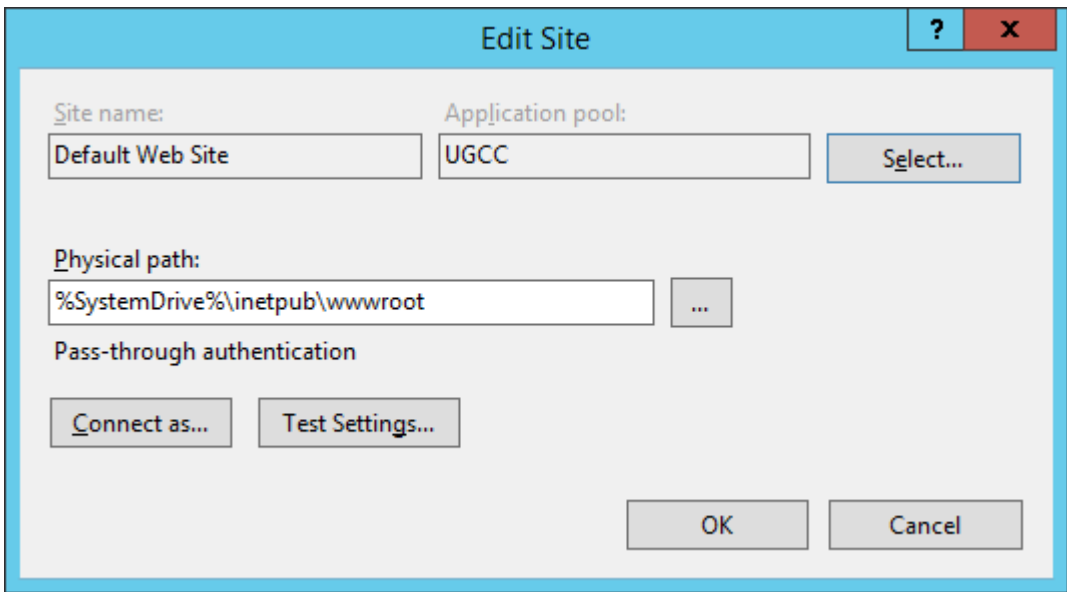
- Now right click on the new 'UGCC' item and select Advanced Settings.
- In the new window that opens, find the 'Identity' setting (under Process Model section), and select 'LocalSystem' from the builtin accounts section. Click OK.



- Expand the list on the left until you see ‘Default Web Site’. Click it. In the Actions bar on the right, click Basic Settings.

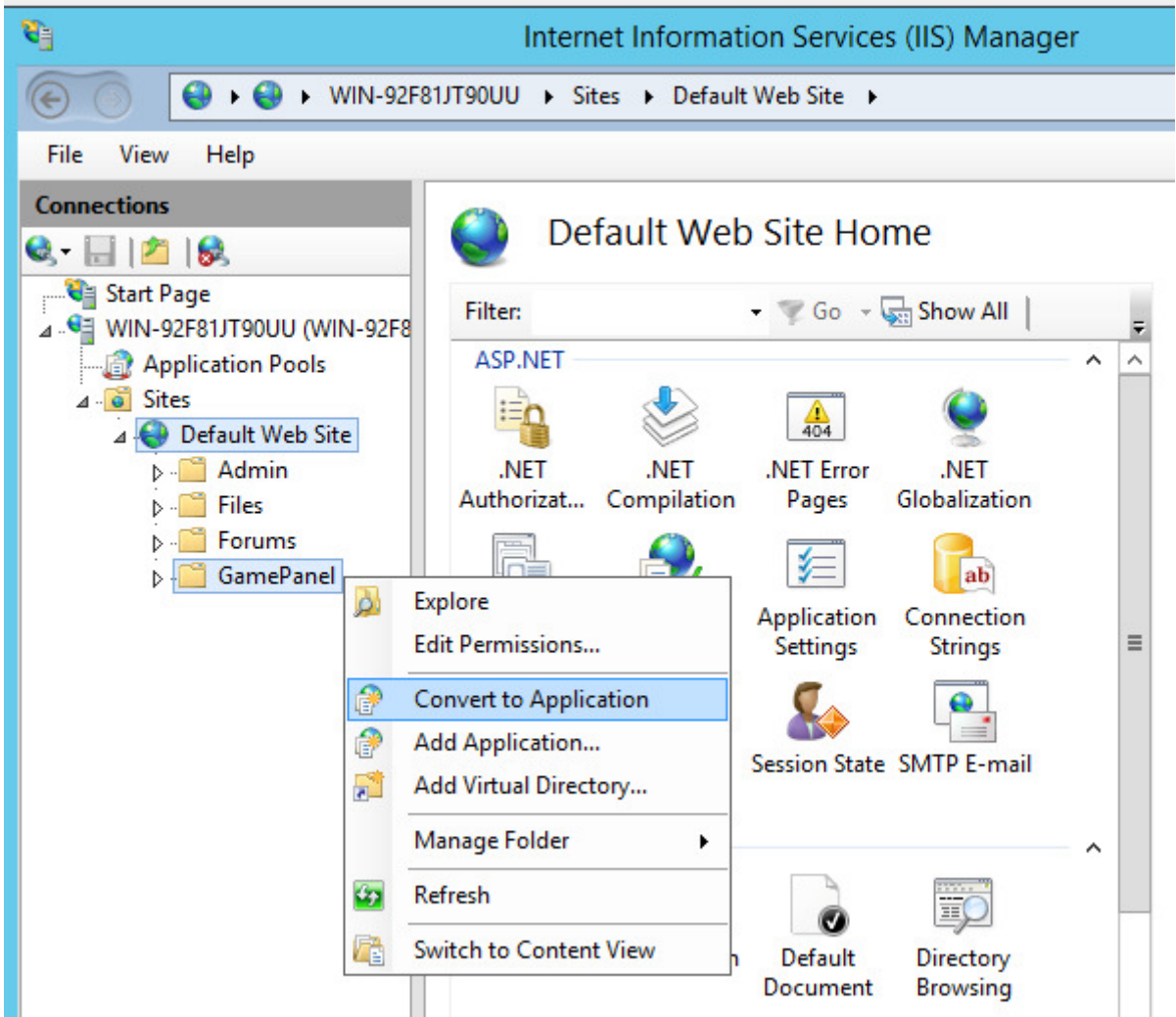


- Click the ‘Select...’ button. And choose the UGCC option listed in the dropdown. Click OK.



- The 'Bindings...' setting right above the 'Basic Settings...' link will let you set the IP/URL/port for the panel.
- Navigate to C:\inetpub\wwwroot. Remove all files and directories. Now copy the panel files (WWWPanel for 32bit OS or WWWPanel-x64 for 64bit OS in deploy archive) into this folder.
- Also copy the Web.config file to C:\Inetpub\wwwrot from the Configs folder of the deploy archive.
- The default values in the Web.config use 'C:\Program Files\UGCC' for everything. You can leave these values if you'd like otherwise edit the Web.config file to point to appropriate locations.
- Configure the database you will be using in Web.config:
 - You can use MySQL or SQLite databases. If you are unsure of which to use, stick with SQLite as it's the easiest option.
 - If you will be using SQLite copy the ugcc.db3 file in the DB folder of the deploy archive into the path you entered in the Web.config for the 'sqlitelocation' setting. If you're using the default values in the Web.config you can copy the ugcc.db3 file to 'C:\Program Files\UGCC'.
 - If you are using MySQL change the 'dbtype' to mysql and enter the values further down for your MySQL server.
- Visit the Check.aspx page in a browser, ensure all tests pass before trying to login or proceed. If you need assistance please post on our forums.

If you would rather your panel install be in a subfolder and not in the root of the site, simply create a folder of any name and copy the panel's files to this folder. Then right click the folder name in the IIS Manager and choose 'Convert to Application'. In this example we are installing into the GamePanel folder making the URL <http://www.brainless.us/GamePanel>.



Next you'll be prompted with the following window. Set your application pool and you're all set.

Add Application

Site name: Default Web Site

Path: /

Alias: GamePanel

Application pool: UGCC

Select...

Example: sales

Physical path: C:\inetpub\wwwroot\GamePanel

...

Pass-through authentication

Connect as...

Test Settings...

☒ Enable Preload

OK

Cancel

The folder icon will change to show it is now configured as an application.

Internet Information Services (IIS) Manager

WIN-92F81JT90UU

Sites

Default Web Site

GamePanel

File

View

Help

Connections

Start Page

WIN-92F81JT90UU (WIN-92F81JT90UU)

Application Pools

Sites

Default Web Site

Admin

Files

Forums

GamePanel

/GamePanel Home

Filter:

Go

Show All

Group by: Area

ASP.NET

.NET Authorizat...

.NET Compilation

.NET Error Pages

.NET Globalization

.NET Profile

.NET Trust Levels

Application Settings

Connection Strings

Machine Key

Pages and Controls

Session State

SMTP E-mail